

WINDOWS VPN SETUP AND CONFIGURATION GUIDE

This guide is intended to assist users in establishing a remote VPN connection to the Lamar University network. Virtual Private Networking (VPN) gives the user an encrypted connection to the Lamar University network. Passwords and other sensitive information will be securely transmitted over the Internet and into the campus network. Traffic to and from the Lamar University network will be secure and permitted only when using VPN.

Introduction:

Lamar University network access via VPN for Windows computer uses Fortinet's Forticlient. Please read these instructions and notes carefully prior to setting up the VPN on your Windows computer.

Requirements:

- 1) LEA 2-Step registration is required for all Lamar University users
- 2) Working internet connection.
- 3) Tested on Windows 10

On campus: VPN client is not required.

Off campus: Must be connected over a working internet connection.



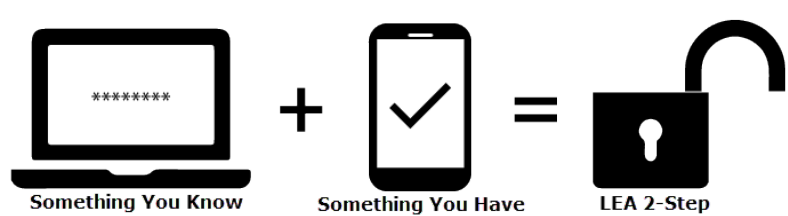
STEP 1

If you have already registered with LEA 2-Step please skip this step.

Register for LEA 2-Step by visiting the link below and clicking on “Get Started with LEA 2-Step”

<http://www.lamar.edu/lea2step>.

LEA 2-Step



LEA 2-Step is a two-factor authentication system that provides additional security for access to Lamar University Information Systems.

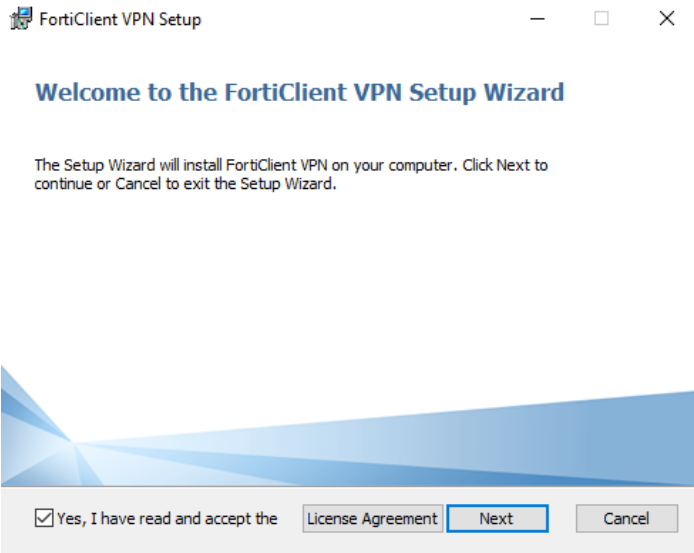
Lamar University Faculty and Staff will be using LEA 2-Step for access to VPN. Your LEA account will need to be registered in addition to enrolling a device that you have. Instructions and information can be found at <http://www.lamar.edu/lea2step>.

**LU VPN ACCESS
REQUIRES LEA-2-STEP
LU VPN ACCESS IS ONLY SUPPORTED
USING THE DUO MOBILE APP**

STEP 2

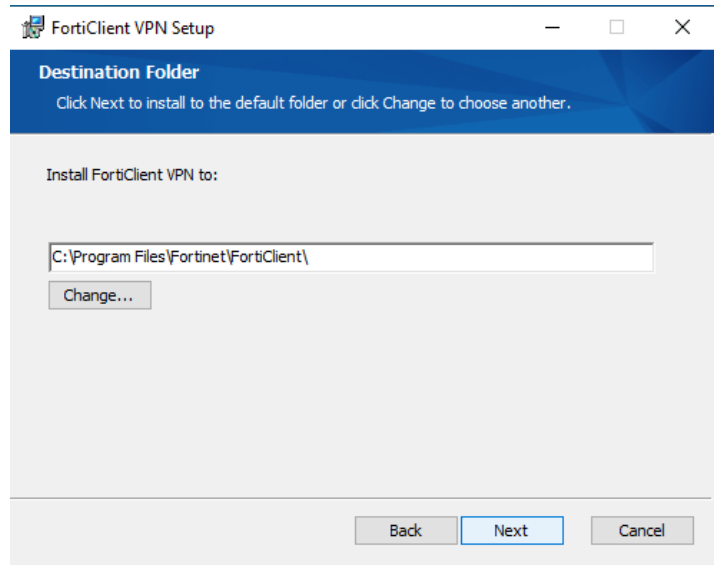
Download and run the installer located on the Lamar University remote access service webpage for your platform.

(If you have an existing forticlient installation from the fortinet website or an older forticlient version please uninstall and reinstall using the installer from Lamar University.)



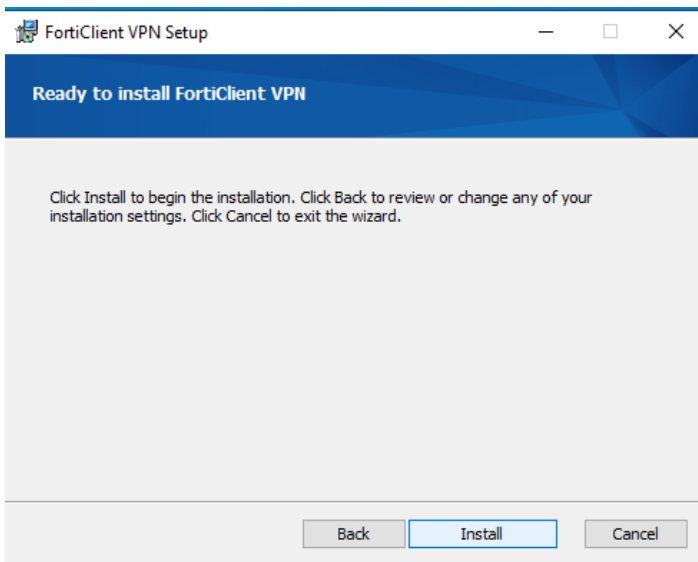
STEP 3

Proceed with the setup by selecting Next.



STEP 4

Verify the installation directory, and select Next.



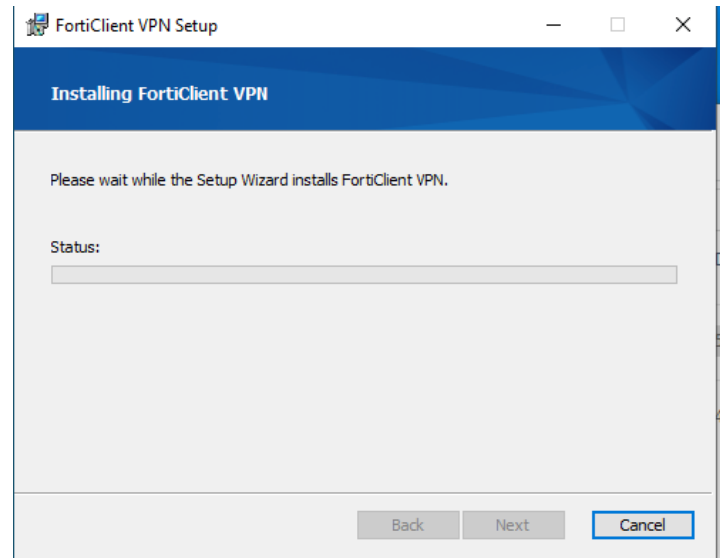
STEP 5

Select Install to begin.



STEP 6

Monitor the installation progress

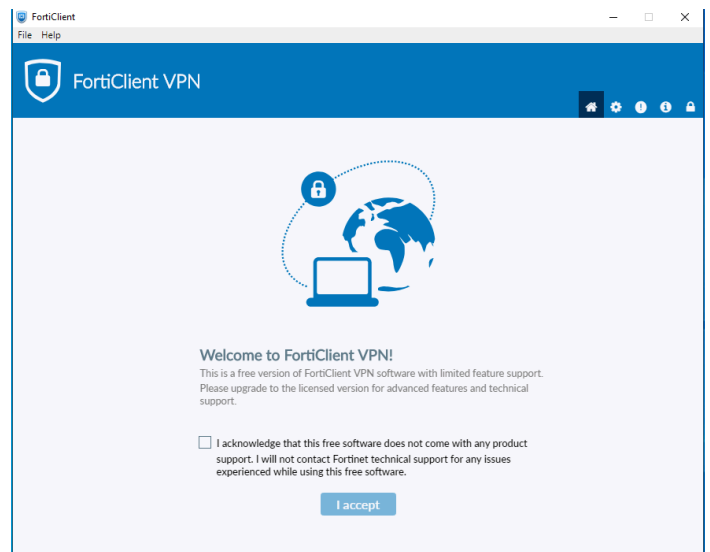
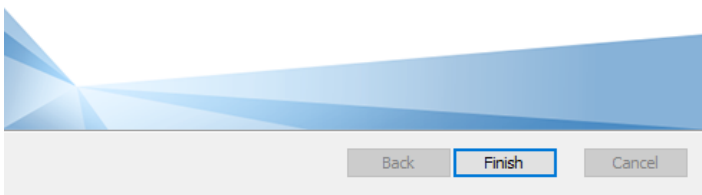


Completed the FortiClient VPN Setup Wizard

Click the Finish button to exit the Setup Wizard.

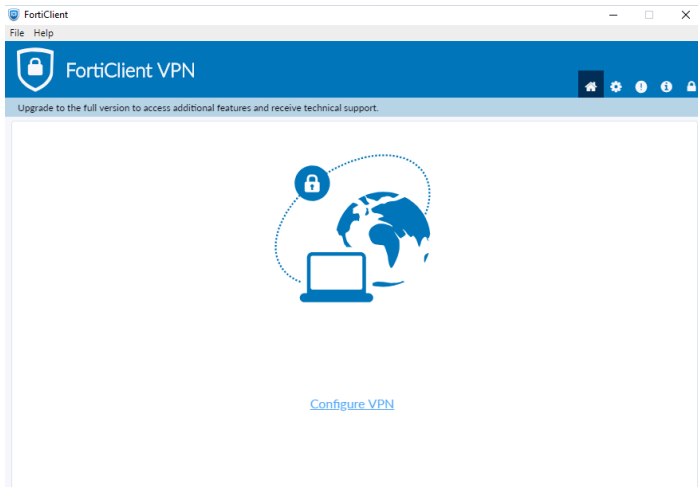
STEP 7

Select “Finish” to exit the installation wizard.



STEP 8

Launch the installed forticlient application and click on “Accept”



STEP 9

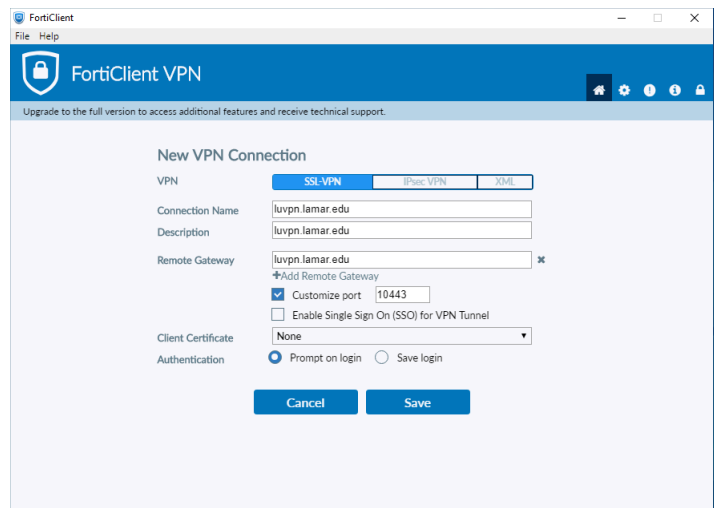
Click on “Configure VPN”

STEP 10

Enter the following information in the fields for a SSL-VPN connection.

Connection Name	luvpn.lamar.edu
Description	luvpn.lamar.edu
Remote Gateway	luvpn.lamar.edu
Customize port	10443

After you complete the fields indicated please click “Apply” then click “Close”.



STEP 11

Verify that `luvpn.lamar.edu` is selected in the first field.

Enter your LEA username into the username field. (DO NOT add @bmt or any other suffixes or prefixes)

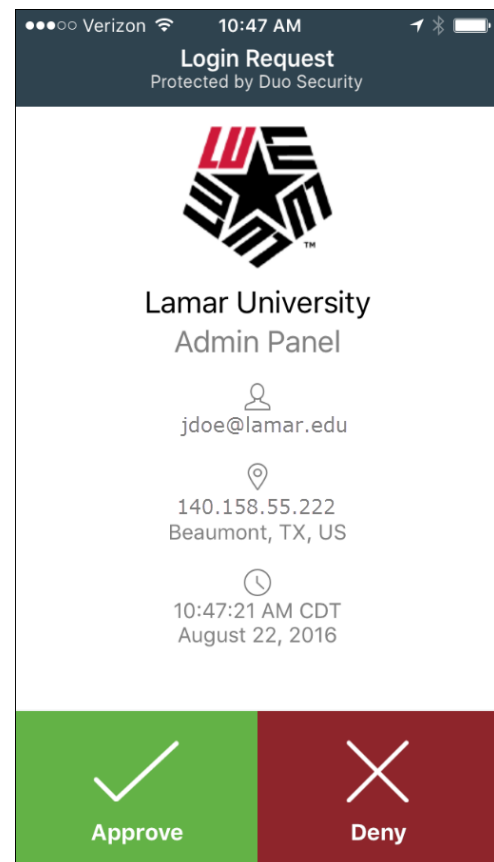
Enter your LEA password into the password field and press connect.



**LU VPN ACCESS
REQUIRES LEA-2-STEP
LU VPN ACCESS IS ONLY SUPPORTED
USING THE DUO MOBILE APP**

STEP 12

When prompted on the Duo mobile app
click “Approve”.





STEP 13

You are now connected with the LU VPN

